



1524mm [5'-0"] WORLD BROILER HOOD

FOR BURGER KING CORPORATION

NIECO BROILERS ONLY

BROILER HOOD MODEL: ELX-ND-BDL-PM-OB-43-(BK-WBH-5-0)

Manufactured by:

GAYLORD INDUSTRIES

10900 SW. AVERY ST.
TUALATIN, OREGON 97062
UNITED STATES OF AMERICA
PHONE: (503) 691-2010
EMAIL: INFO@GAYLORDUSA.COM

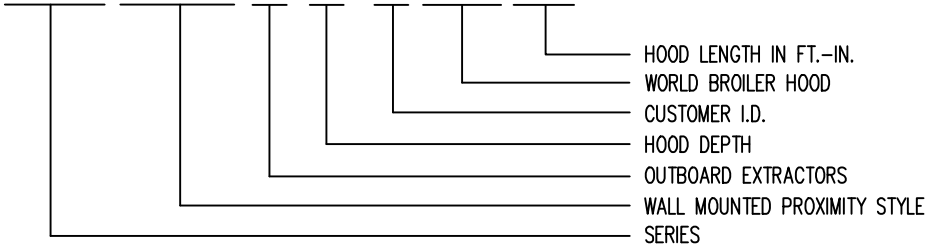
Drwg no.: C-12647

Sheet: 1
Rev. : 07

MODEL NUMBER DESCRIPTION

DRAWING INDEX

DUKE BROILER HOOD MODEL NUMBER DESCRIPTION
ELX-ND-BDL-PM-OB-43-(BK-WBH-5-0)



Sheet #	Description
01	COVER SHEET
02	INDEX AND MODEL NUMBER DESCRIPTION
03	GAYLORD CONTACTS
04	LISTING, TESTING AND APPROVALS
05	SPECIFICATIONS
06	BROILER HOOD ELEVATION VIEW WITH NIECO BROILERS
07	BROILER HOOD SECTION VIEW WITH NIECO MPB94 BROILER
08	BROILER HOOD LEFT & RIGHT END VIEWS
09	BROILER HOOD PLAN VIEW
10	BROILER HOOD OPTIONAL UTILITIES ELEVATION VIEW
11	BROILER HOOD OPTIONAL UTILITIES PLAN VIEW
12	BROILER HOOD FIRE SYSTEM PIPING PLAN VIEW
13	BROILER HOOD FIRE SYSTEM PIPING DETAILS
14	OPTIONAL BROILER HOOD ENCLOSURE PANEL INSTALLATIONS INSTRUCTIONS
15	BROILER HOOD HANGING DETAILS
16	FIRE SYSTEM EXTERNAL PIPING DETAILS
17	TYPICAL GAS APPLIANCE CONNECTION DETAILS
18	OPTIONAL WALL FLASHING DETAILS
19	PROCEDURE TO CONFIRM HOOD EXHAUST VOLUME
20	TYPICAL ROC HOODS CONTROL MATRIX

07	JFA	1-21-16	NO CHANGE		MODEL #				ITEM #	WORK ORDER
06	JFA	1/27/14	NO CHANGE		ELX-ND-BDL-PM-OB-43-(BK-WBH-5-0)					
05	JFA	10/10/11	NO CHANGE							
04	CG	8/01/11	REVISED TO ELX							
REV	DWN.BY	DATE	DESCRIPTION	APP'D	DRAWN BY: SN	DESIGN BY:	CHECKED BY:	ELECT. CHECK:	APPR'D. BY:	F.P. CHECK



10900 SW. AVERY ST.
TUALATIN
OR 97062-1149
(503) 691-2010

WORLD BROILER HOOD
1524mm [5'-0"]
BURGER KING CORPORATION

DATE:	12/17/09
SCALE:	NTS
DWG. NO.:	C-12647
FILE NO.:	
SHEET NO.:	2
REV. NO.:	07

Gaylord Contact Information

Overview

The Gaylord package includes the following:

1. Broiler Hood
2. Broiler Hood Enclosure Panels (Optional)
3. Broiler Hood Wall Flashing (Optional)


Direct Gaylord Technical Support

Gaylord Industries, Tualatin, Oregon USA:

1. John Anderson

Direct phone: 971-223-1238

E-Mail: johna@gaylordusa.com

07	JFA	1-21-16	NO CHANGE		MODEL #	ITEM #	WORK ORDER	 10900 SW. AVERY ST. TUALATIN OR 97062-1149 (503) 691-2010	WORLD BROILER HOOD 1524mm [5'-0"] BURGER KING CORPORATION	DATE: 12/17/09
06	JFA	1/27/14	NO CHANGE		ELX-ND-BDL-PM-OB-43-(BK-WBH-5-0)					SCALE: NTS
05	JFA	10/10/11	NO CHANGE							DWG. NO.: C-12647
04	CG	8/01/11	REVISED TO ELX., OMIT SCOTT N.							FILE NO.:
REV/DWN.BY	DATE	DESCRIPTION	APP'D	DRAWN BY: SN	DESIGN BY:	CHECKED BY:	ELECT. CHECK:	APPR'D. BY:	F.P. CHECK	SHEET NO.: 3 REV. NO.: 07

HOOD LISTING AND APPROVAL REFERENCE

ELX HOOD

INTERTEK TESTING SERVICES, INC.

THE ELX HOOD IS E.T.L. LISTED: EXHAUST HOODS WITHOUT
EXHAUST DAMPERS, REPORT NO. 3192993CRT-002.
TESTED TO U.L. STANDARD 710 REQUIREMENTS.



NATIONAL FIRE PROTECTION ASSOCIATION

MEETS ALL REQUIREMENTS OF NFPA-96
"STANDARD FOR VENTILATION CONTROL & FIRE PROTECTION OF
COMMERCIAL COOKING OPERATIONS"

ETL-SANITATION LISTED

MEETS ALL REQUIREMENTS OF NSF STANDARD NO.2
"FOOD SERVICE EQUIPMENT"




Intertek

42106

MECHANICAL CODES

MEETS ALL REQUIREMENTS OF THE UMC, BOCA, SBCCI AND
IMC.

07	JFA	1-21-16	NO CHANGE		MODEL #				ITEM #	WORK ORDER	<div><p>10900 SW. AVERY ST. TUALATIN OR 97062-1149 (503) 691-2010</p></div> <div><p>WORLD BROILER HOOD</p><p>1524mm [5'-0"]</p><p>BURGER KING CORPORATION</p></div>	DATE: 12/17/09		
06	JFA	1/27/14	UPDATE LISTING INFORMATION		ELX-ND-BDL-PM-OB-43-(BK-WBH-5-0)							SCALE: NTS		
05	JFA	10/10/11	NO CHANGE									DWG. NO.: C-12647		
04	CG	8/01/11	REVISED TO ELX									FILE NO.:		
REV	DWN	BY	DATE	DESCRIPTION	APP'D	DRAWN BY	SN	DESIGN	CHECKED	ELECT. CHECK	APPR'D. BY	F.P. CHECK	SHEET NO.: 4	REV. NO.: 07

World Broiler Hood Specifications

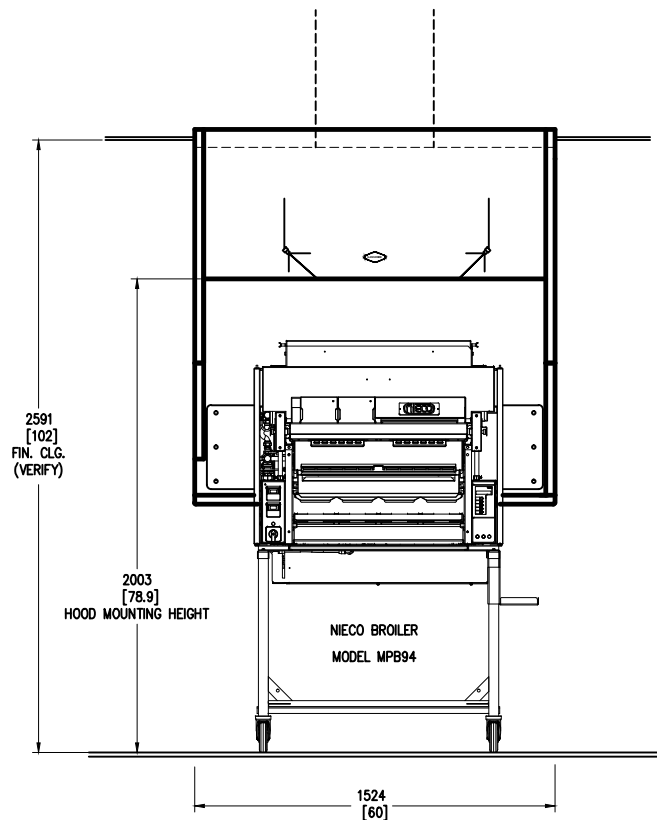
Broiler Hood Specifications

Gaylord Model ELX-ND-BDL-PM-OB-43-(BK-WBH-5-0), canopy style wall mounted broiler hood 1524 mm long (5'-0") x 1092 mm front to back (43"). The hood is specifically designed to go over a Nieco MPB94, 952E, JF94E broiler. The hood is designed for either a Standard or Reverse ROC building. The ends and front panels are insulated double wall construction, and the top is covered with 50mm thick insulation. The hood utilizes patented high efficiency stainless steel Gaylord XGS Extractors. The extractors testing mirror ASTM Standard F2519 -2005, and are ETL Listed to UL Standard 1046. The extractors are hinged to open to facilitate cleaning. The design includes a built in 127mm [5"] air space at the back for allowing direct mounting to a limited combustible wall (sheet rock on metal studs) for compliance to NFPA-96. Also built into the back of the hood are utility raceways that may be used for gas piping and electrical services. All gas piping is provided and installed by the plumbing contractor, and all electrical conduit, junction boxes, wire and receptacles are provided and installed by the electrical contractor. The hood includes factory pre-piping for an Ansul R-102 fire extinguishing system or as an option may be pre-piped for an Amerex KP fire system. The hood is constructed of all 18 gauge, type 300 series stainless steel, number 4 finish.

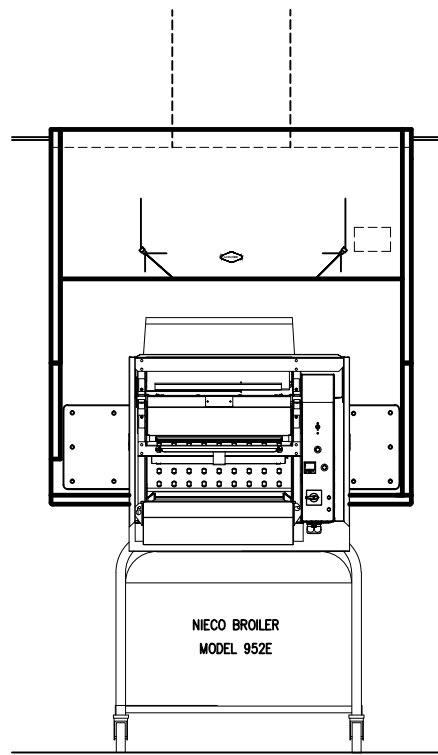
Optional Wall Flashing One set of wall flashing for broiler hood as shown on Sheet 18 of this drawing package.

Hanging Weight: The hanging weight of the broiler hood is 125 kG [275 lbs].

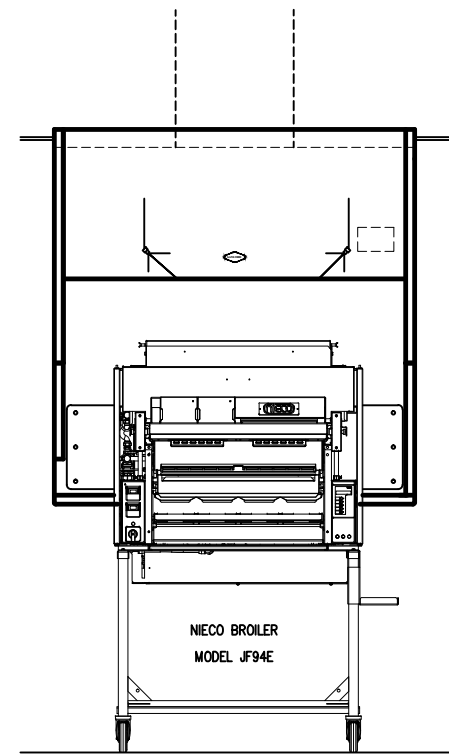
07	JFA	1-21-16	NO CHANGE		MODEL #				ITEM #	WORK ORDER	<div><div>GAYLORD</div><div>10900 SW. AVERY ST. TUALATIN OR 97062-1149 (503) 691-2010</div></div>	WORLD BROILER HOOD 1524mm [5'-0"] BURGER KING CORPORATION			DATE:	12/17/09
06	JFA	1/27/14	UPDATE TO NIECO ONLY HOOD		ELX-ND-BDL-PM-OB-43-(BK-WBH-5-0)							SCALE:	N.T.S.			
05	JFA	10/10/11	NO CHANGE									DWG. NO.:	C-12647			
04	CG	8/01/11	REVISED TO ELX, UPDATED SPECS.									FILE NO.:				
REV	DWN.	BY	DATE	DESCRIPTION	APP'D	DRAWN BY:	SN	DESIGN BY:	CHECKED BY:	ELECT. CHECK:	APPR'D. BY:	F.P. CHECK	SHEET NO.:	5	REV. NO.:	07



BROILER HOOD FRONT ELEVATION
WITH NIECO MPB94 BROILER



BROILER HOOD FRONT ELEVATION
WITH NIECO 952E BROILER



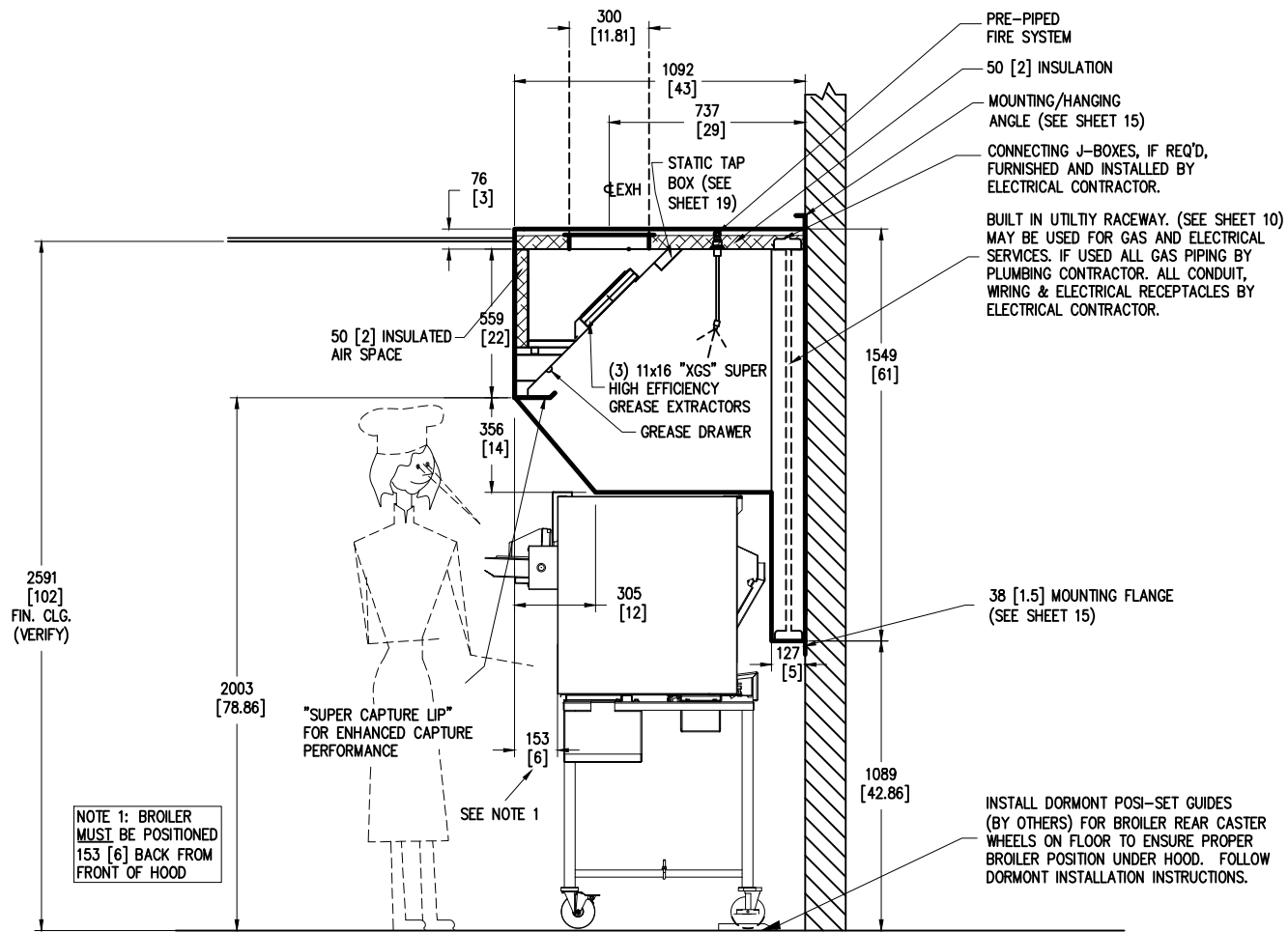
BROILER HOOD FRONT ELEVATION
WITH NIECO JF94E BROILER

07	JFA	1-21-16	NO CHANGE		MODEL #	ITEM #	WORK ORDER
06	JFA	1/27/14	UPDATE TO NIECO ONLY HOOD		ELX-ND-BDL-PM-OB-43-(BK-WBH-5-0)		
05	JFA	10/10/11	NO CHANGE				
04	CG	8/01/11	REVISED TO ELX, ADD DUKE BROILER				
REV'DWN.BY	DATE	DESCRIPTION	APP'D	DRAWN BY: SN	DESIGN BY:	CHECKED BY:	ELECT. CHECK:

GAYLORD
10900 SW. AVERY ST.
TUALATIN
OR 97062-1149
(503) 691-2010

WORLD BROILER HOOD
1524mm [5'-0"]
BURGER KING CORPORATION

DATE:	12/17/09
SCALE:	N.T.S.
DWG. NO.:	C-12647
FILE NO.:	
SHEET NO.:	6
REV. NO.:	07



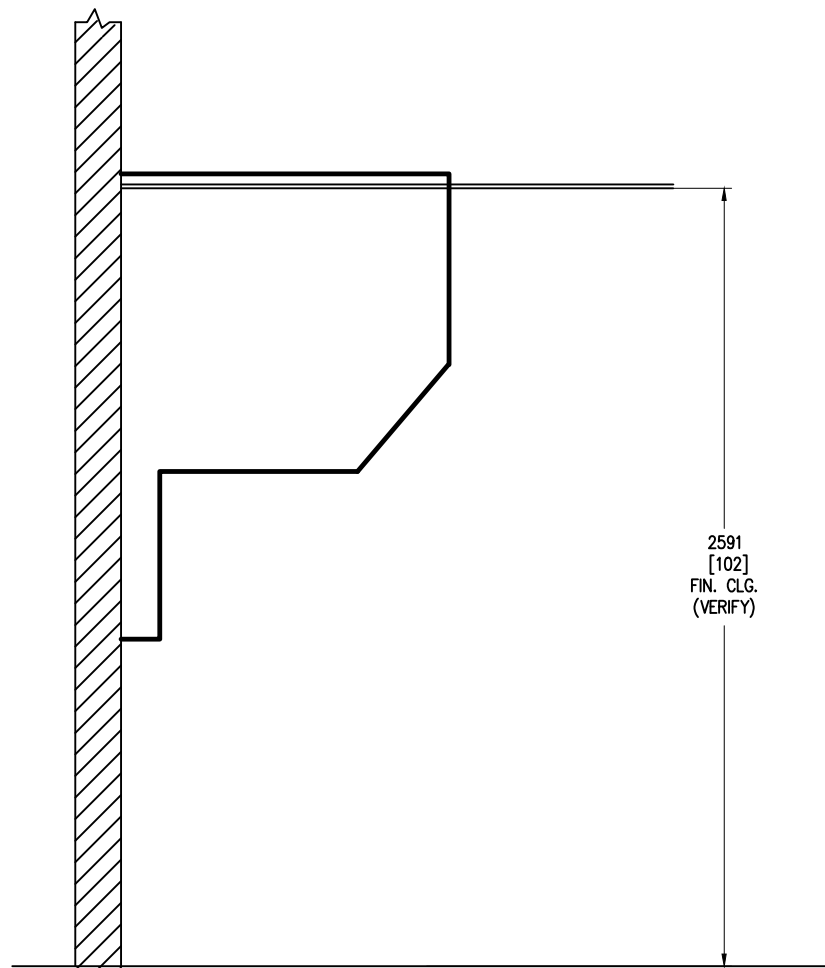
BROILER HOOD SECTION VIEW
NIECO MPB94 BROILER SHOWN

07	JFA	1-21-16	NO CHANGE		MODEL #	ITEM #	WORK ORDER
06	JFA	1/27/14	UPDATE TO NIECO ONLY HOOD		ELX-ND-BDL-PM-OB-43-(BK-WBH-5-0)		
05	JFA	10/10/11	NO CHANGE				
04	CG	8/01/11	REVISED TO ELX				
REV/DWN.BY	DATE	DESCRIPTION	APP'D	DRAWN BY: SN	DESIGN BY:	CHECKED BY:	ELECT. CHECK:

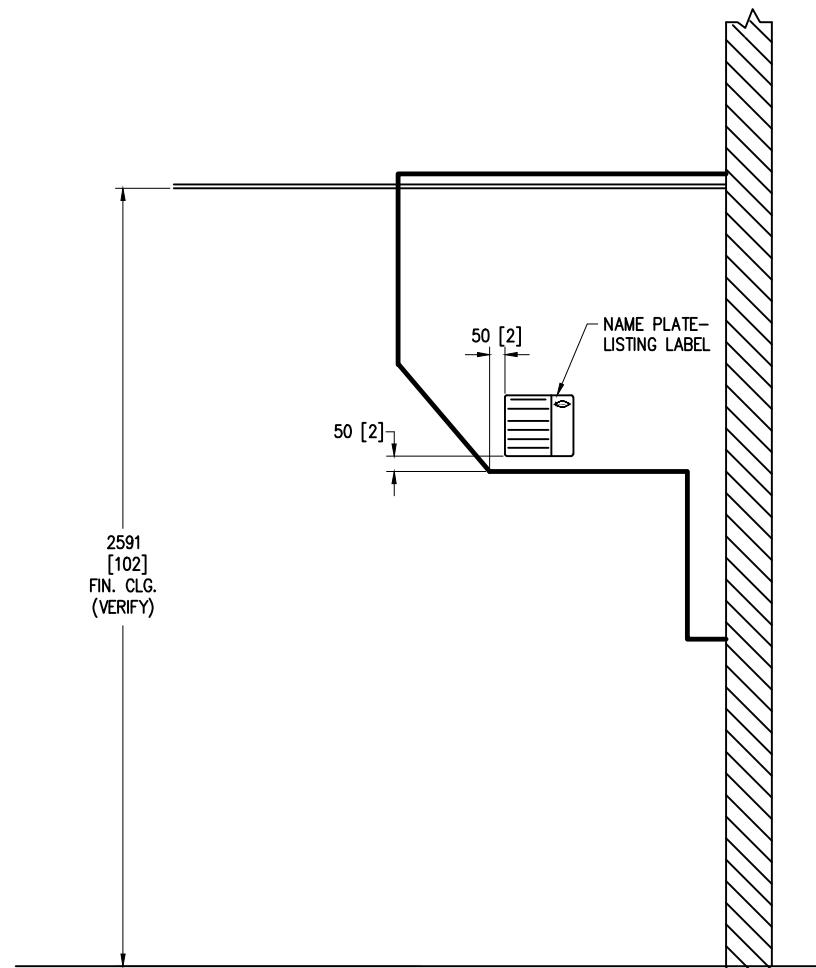
GAYLORD
10900 SW. AVERY ST.
TUALATIN
OR 97062-1149
(503) 691-2010

WORLD BROILER HOOD
1524mm [5'-0"]
BURGER KING CORPORATION


DATE: 12/17/09
SCALE: N.T.S.
DWG. NO.: C-12647
FILE NO.:
SHEET NO.: 7 REV. NO.: 07

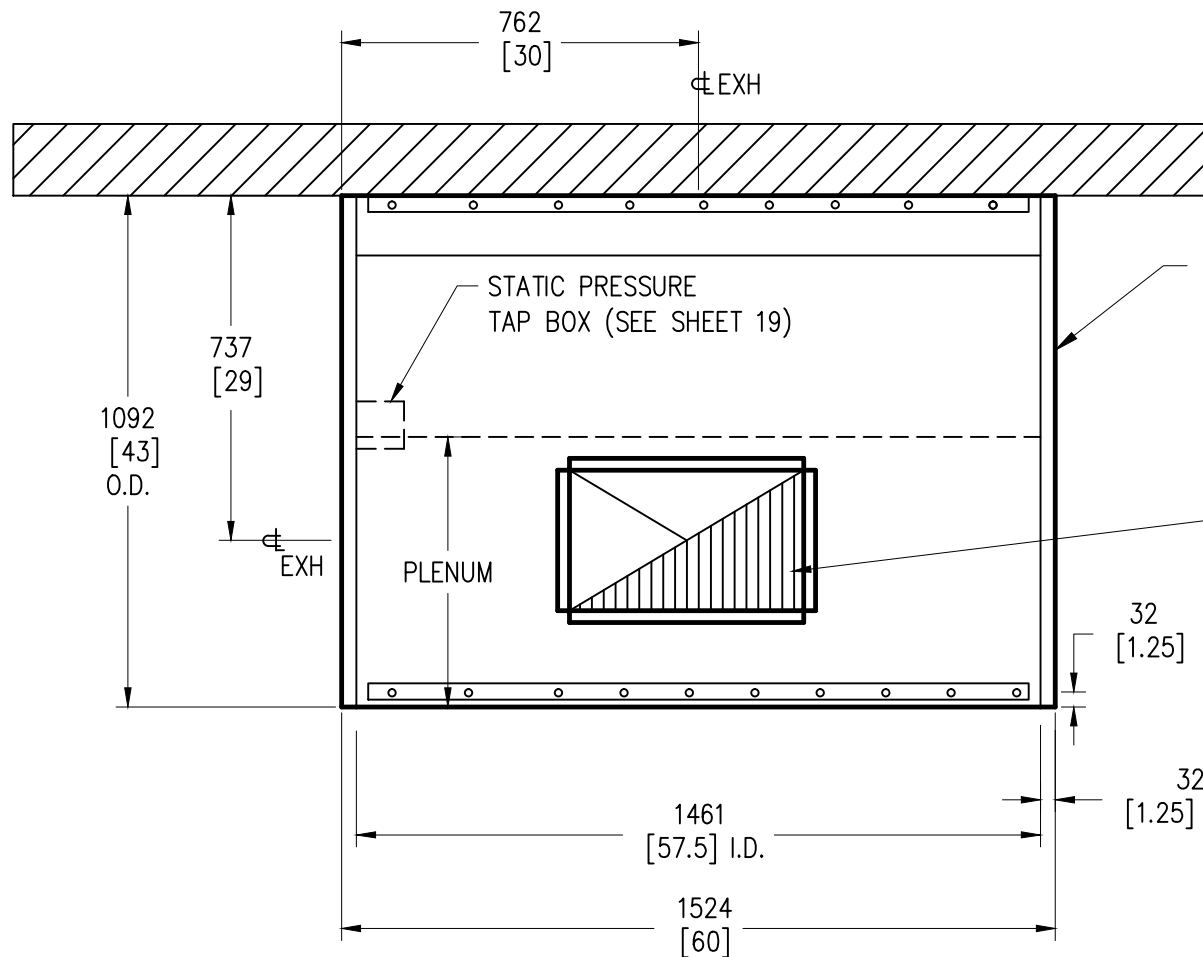


BROILER HOOD LEFT END VIEW



BROILER HOOD RIGHT END VIEW

07	JFA	1-21-16	NO CHANGE		MODEL #	ITEM #	WORK ORDER	 10900 SW. AVERY ST. TUALATIN OR 97062-1149 (503) 691-2010	WORLD BROILER HOOD 1524mm [5'-0"] BURGER KING CORPORATION	DATE: 12/17/09
06	JFA	1/27/14	NO CHANGE		ELX-ND-BDL-PM-OB-43-(BK-WBH-5-0)					SCALE: N.T.S.
05	JFA	10/10/11	NO CHANGE							DWG. NO.: C-12647
04	CG	8/01/11	REVISED TO ELX, OMIT SIDE PANELS							FILE NO.:
REV/DWN.BY	DATE	DESCRIPTION	APP'D	DRAWN BY: SN	DESIGN BY:	CHECKED BY:	ELECT. CHECK:	APPR'D. BY:	F.P. CHECK	SHEET NO.: 8 REV. NO.: 07



BROILER HOOD PLAN VIEW

EXHAUST INFORMATION		
MPB94 NIECO BROILER		
DUCT SIZE	300 x 500	11.81 IN x 19.69 IN
VOLUME	2600 M ³ /H	1529 FT ³ /MIN
S.P. @ SPIGOT	260 PA	1.05 IN WG
VELOCITY	4.79 M/S	947 FT/MIN
FOR USE ON JF94G NIECO BROILER		
DUCT SIZE	300 x 500	11.81 IN x 19.69 IN
VOLUME	1800 M ³ /H	1060 FT ³ /MIN
S.P. @ SPIGOT	174 PA	.7 IN WG
VELOCITY	3.33 M/S	655 FT/MIN
FOR USE ON JF94E NIECO & JF93G/E BROILER		
DUCT SIZE	300 x 500	11.81 IN x 19.69 IN
VOLUME	1526 M ³ /H	898 FT ³ /MIN
S.P. @ SPIGOT	125 PA	.5 IN WG
VELOCITY	2.83 M/S	555 FT/MIN

REV	DATE	DESCRIPTION	APP'D	DRAWN BY	SN	DESIGN BY	CHECKED BY	ELECT. CHECK	APPR'D BY	F.P. CHECK
07	JFA	1-21-16	UPDATE NIECO MODEL/HOOD AIR							
06	JFA	1/27/14	UPDATE TO NIECO ONLY HOOD							
04	CG	8/01/11	REVISED TO ELX, CHANGE DUCT SIZE			ELX-ND-BDL-PM-OB-43-(BK-WBH-5-0)				
03	SN	9/23/10	CHANGED DUCT SIZE & S.P.							

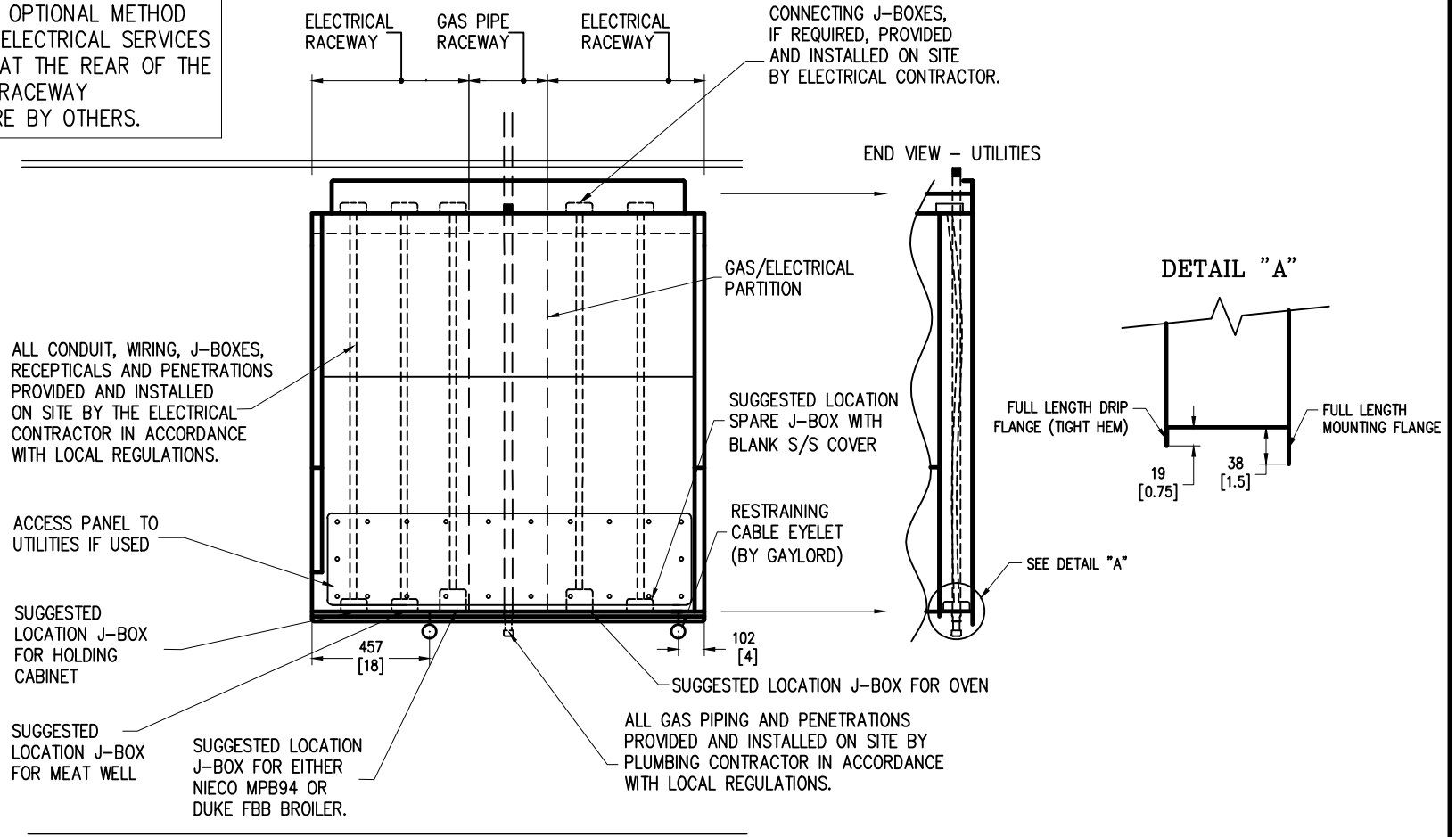
GAYLORD
10900 SW. AVERY ST.
TUALATIN
OR 97062-1149
(503) 691-2010

WORLD BROILER HOOD
1524mm [5'-0"]
BURGER KING CORPORATION

DATE: 12/17/09
SCALE: N.T.S.
DWG. NO.: C-12647
FILE NO.:
SHEET NO.: 9 REV. NO.: 06

IMPORTANT NOTE:

THIS DRAWING SHOWS THE OPTIONAL METHOD OF BRINGING IN GAS AND ELECTRICAL SERVICES THROUGH THE RACEWAYS AT THE REAR OF THE HOOD. ALL UTILITIES AND RACEWAY PENETRATIONS SHOWN HERE BY OTHERS.



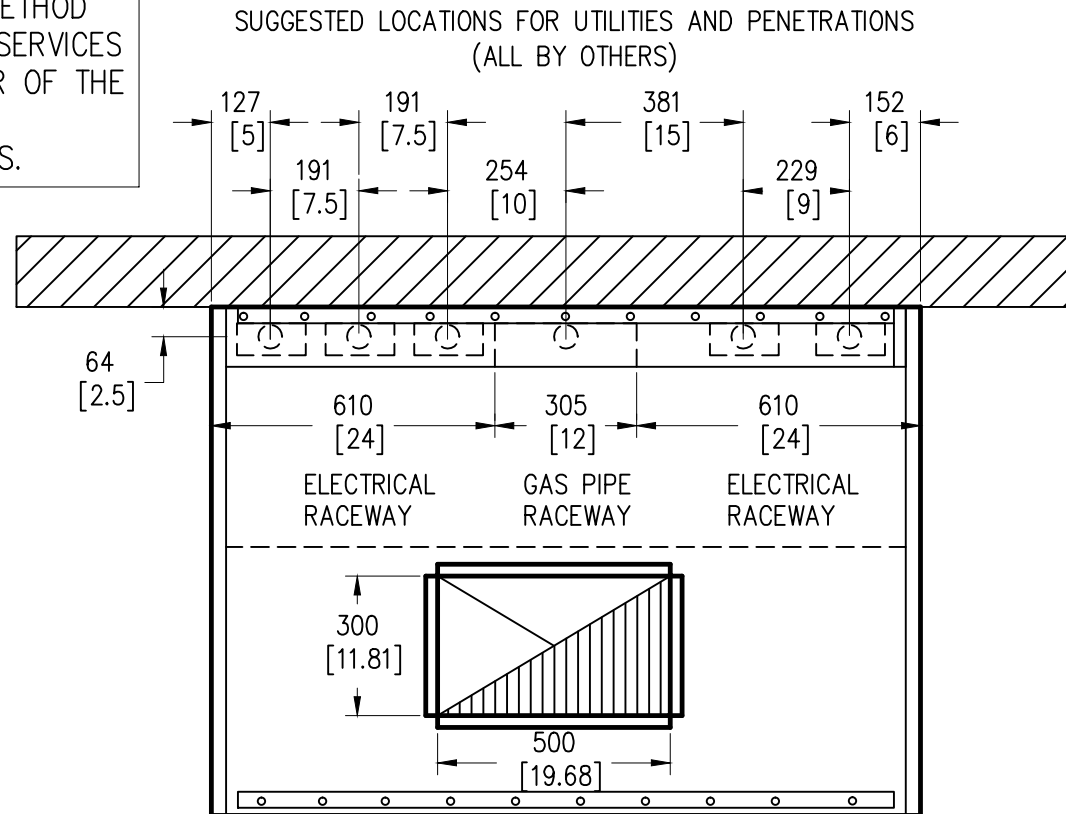
BROILER HOOD ELEVATION VIEW - UTILITIES

07	JFA	1-21-16	NO CHANGE		MODEL #	ITEM #	WORK ORDER
06	JFA	1/27/14	NO CHANGE		ELX-ND-BDL-PM-OB-43-(BK-WBH-5-0)		
05	JFA	10/10/11	NO CHANGE				
04	CG	8/01/11	REVISED TO ELX				
REV/DWN.BY	DATE	DESCRIPTION	APP'D	DRAWN BY: SN	DESIGN BY:	CHECKED BY:	ELECT. CHECK: APPR'D. BY: F.P. CHECK


 10900 SW. AVERY ST. TUALATIN OR 97062-1149 (503) 691-2010	WORLD BROILER HOOD 1524mm [5'-0"] BURGER KING CORPORATION		DATE: 12/17/09 SCALE: N.T.S. DWG. NO.: C-12647 FILE NO.: SHEET NO.: 10 REV. NO.: 07
--	---	--	---

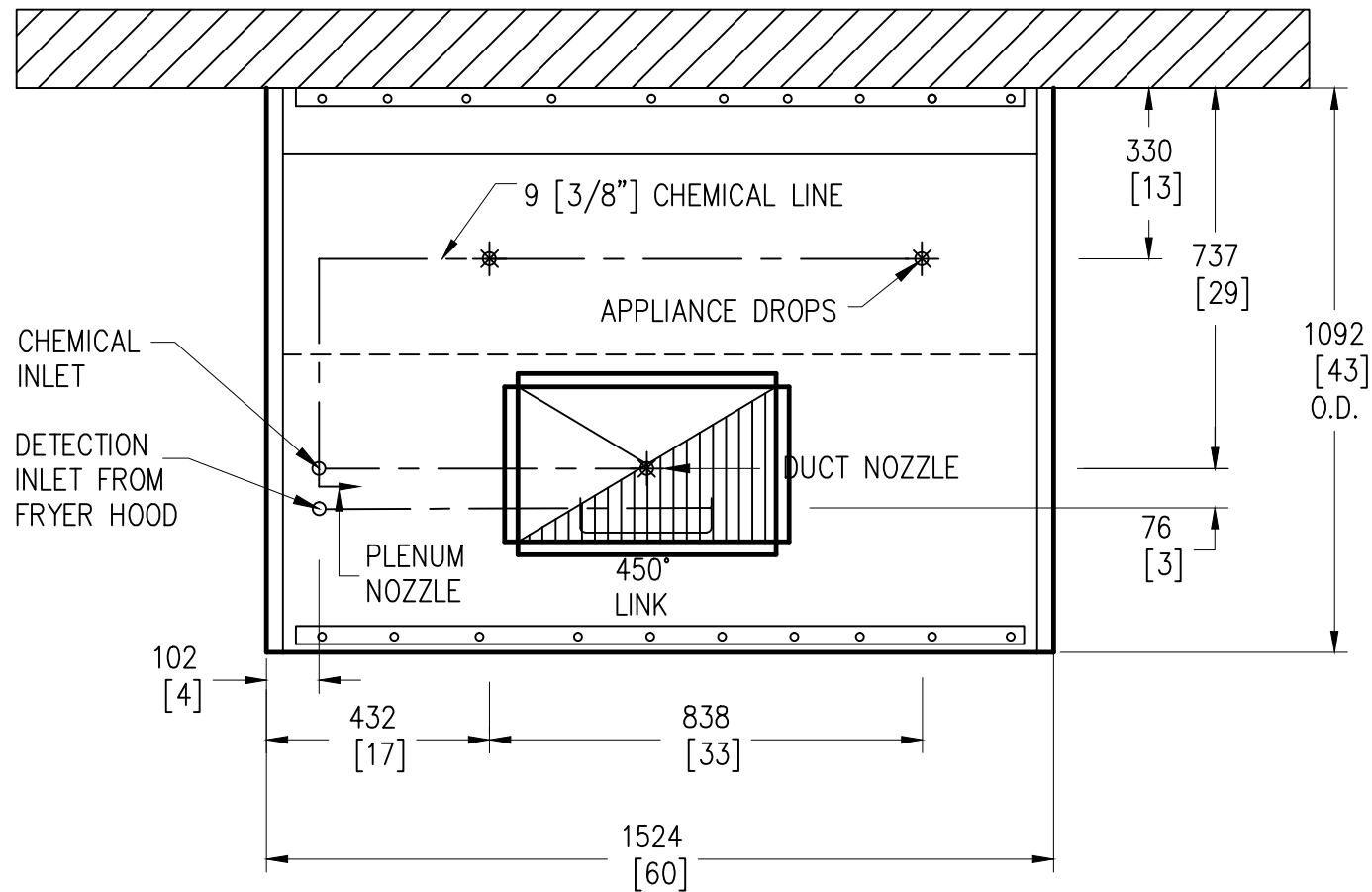
IMPORTANT NOTE:

THIS DRAWING SHOWS THE OPTIONAL METHOD OF BRINGING IN GAS AND ELECTRICAL SERVICES THROUGH THE RACEWAYS AT THE REAR OF THE HOOD. ALL UTILITIES AND RACEWAY PENETRATIONS SHOWN HERE BY OTHERS.




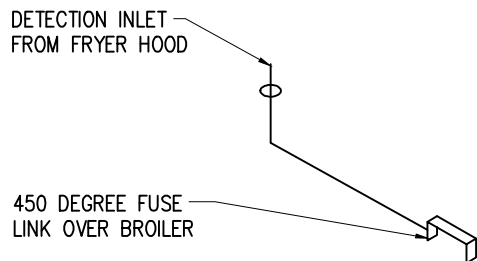
BROILER HOOD PLAN VIEW – SUGGESTED UTILITY OPENINGS

07	JFA	1-21-16	NO CHANGE		MODEL #	ITEM #	WORK ORDER	 10900 SW. AVERY ST. TUALATIN OR 97062-1149 (503) 691-2010	WORLD BROILER HOOD 1524mm [5'-0"] BURGER KING CORPORATION	DATE: 12/17/09
06	JFA	1/27/14	CHANGE DUCT SIZE		ELX-ND-BDL-PM-OB-43-(BK-WBH-5-0)					SCALE: N.T.S.
05	JFA	10/10/11	CHANGE DUCT SIZE							DWG. NO.: C-12647
04	CG	8/01/11	REVISED TO ELX, CHANGE DUCT SIZE							FILE NO.:
REV/DWN.BY	DATE	DESCRIPTION	APP'D	DRAWN BY: SN	DESIGN BY:	CHECKED BY:	ELECT. CHECK:	APPR'D. BY:	F.P. CHECK:	SHEET NO.: 11 REV. NO.: 07

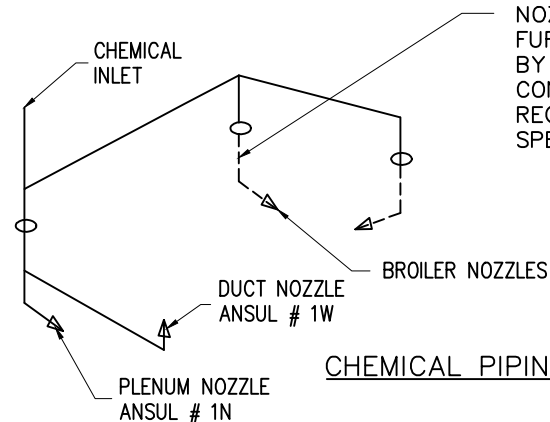


BROILER HOOD PLAN VIEW – FIRE SYSTEM PIPING LOCATIONS

07	JFA	1-21-16	NO CHANGE		MODEL #			ITEM #	WORK ORDER	<div><p>10900 SW. AVERY ST. TUALATIN OR 97062-1149 (503) 691-2010</p></div> <div><p>WORLD BROILER HOOD 1524mm [5'-0"] BURGER KING CORPORATION</p></div>	DATE: 12/17/09		
06	JFA	1/27/14	CHANGE DUCT SIZE		ELX-ND-BDL-PM-OB-43-(BK-WBH-5-0)						SCALE: N.T.S.		
05	JFA	10/10/11	CHANGE DUCT SIZE								DWG. NO.: C-12647		
04	CG	8/01/11	REVISED TO ELX, CHANGE DUCT SIZE								FILE NO.:		
REV	DWN.BY	DATE	DESCRIPTION	APP'D	DRAWN BY:	SN	DESIGN BY:	CHECKED BY:	ELECT. CHECK:	APPR'D. BY:	F.P. CHECK:	SHEET NO.: 12	REV. NO.: 07



DETECTOR PIPING




CHEMICAL PIPING

IMPORTANT NOTE:
PRE-PIPED TO THIS POINT BY
GAYLORD. PIPE DROPS,
NOZZLES AND SWIVEL ELBOWS
FURNISHED AND INSTALLED
BY THE FIRE SYSTEM
CONTRACTOR TO MEET ANSUL
REQUIREMENTS FOR THE
SPECIFIC BROILER USED.

IMPORTANT NOTE:
ALL BLOW OFF CAPS TO BE
HIGH TEMPERATURE METAL
PART NUMBER 12504

HPF=HOOD PENETRATION FITTING
(U.L. LISTED)

FIRE SYSTEM PIPING DETAILS BROILER HOOD

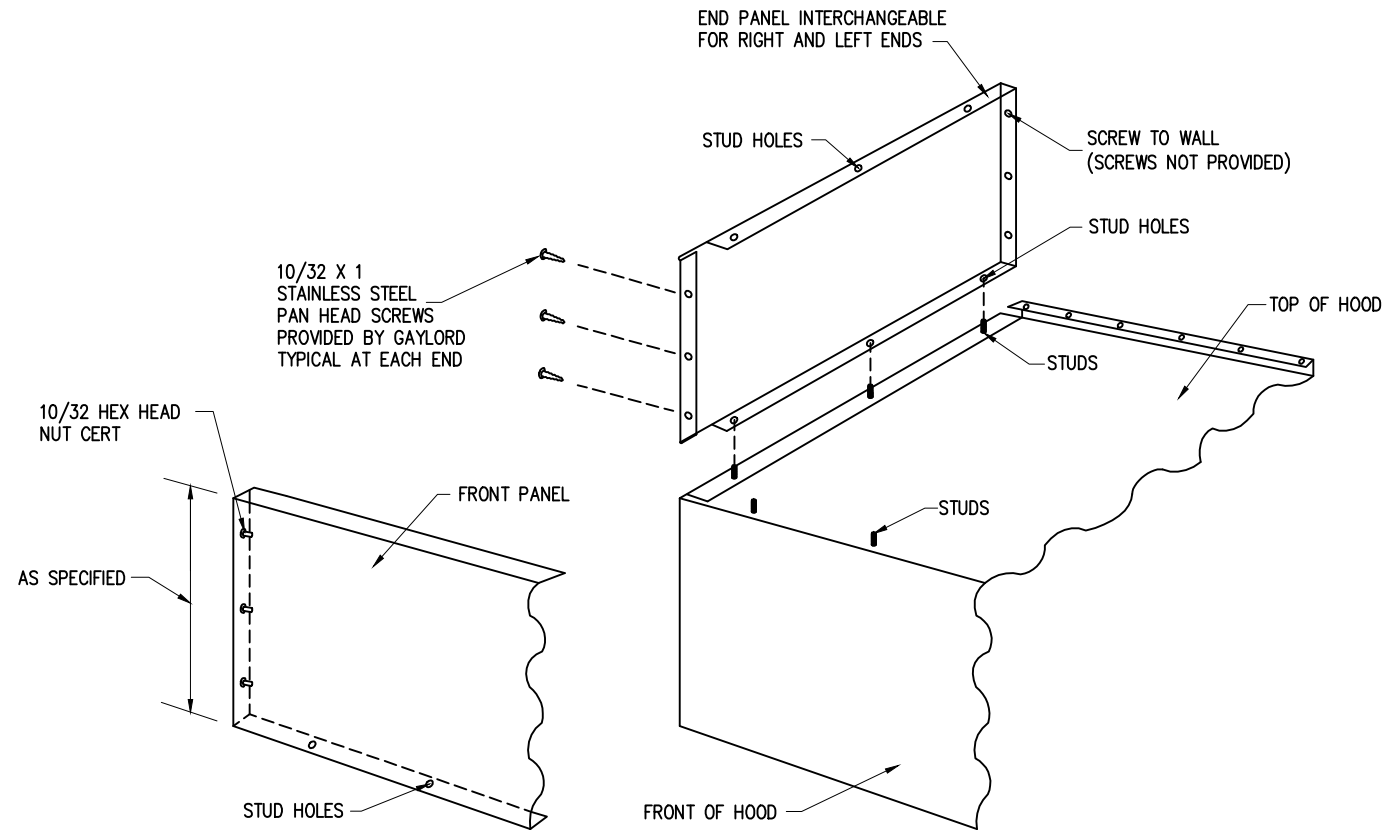
07	JFA	1-21-16	NO CHANGE		MODEL #	ITEM #	WORK ORDER	 10900 SW. AVERY ST. TUALATIN OR 97062-1149 (503) 691-2010	WORLD BROILER HOOD 1524mm [5'-0"] BURGER KING CORPORATION	DATE: 12/17/09
06	JFA	1/27/14	NO CHANGE		ELX-ND-BDL-PM-OB-43-(BK-WBH-5-0)					SCALE: N.T.S.
05	JFA	10/10/11	NO CHANGE							DWG. NO.: C-12647
04	CG	8/01/11	REVISED TO ELX							FILE NO.:
REV/DWN.BY	DATE	DESCRIPTION	APP'D	DRAWN BY: SN	DESIGN BY:	CHECKED BY:	ELECT. CHECK:	APPR'D. BY:	F.P. CHECK:	SHEET NO.: 13 REV. NO.: 07

Installation Instructions

Overview

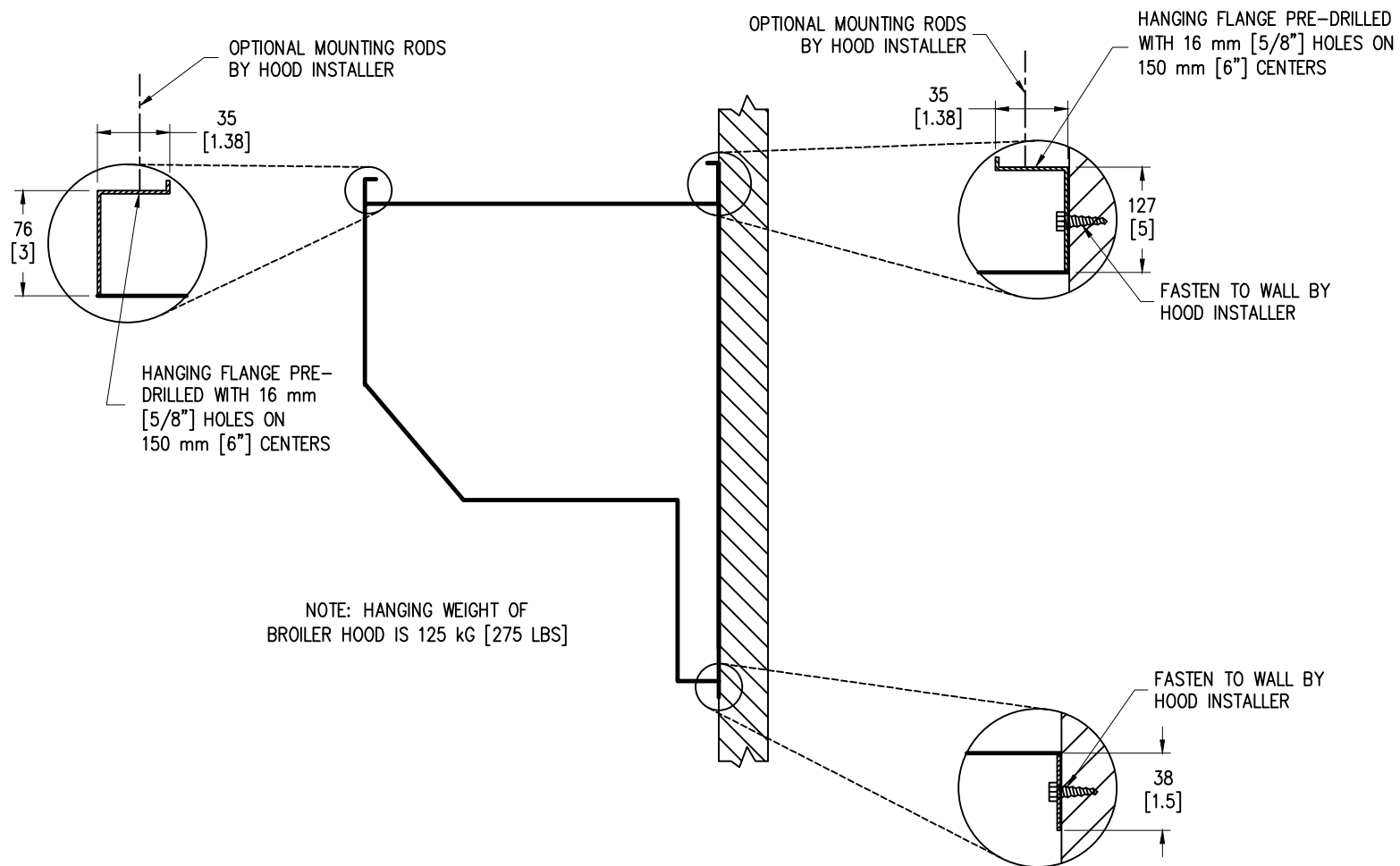
The Enclosure Panels are designed to fill the space between the top of the hood and the finished ceiling to conceal the exhaust duct, conduits and piping. They are shipped as a three piece kit, Front Panel and two End Panels. They are easy to install by using the following instructions.

1. The End Panels are interchangeable for either the right or left ends.
2. First install the End Panels. With the tight hem the holes facing the front of the hood, slide the End Panel down so the studs on the hood go through the stud holes in the bottom of the panel.
3. Level the panel for vertical, at the end next to the wall, and attach the panel to the wall with screws through the three screw holes. The screws are not provided.
4. Repeat this process for the opposite end.
5. Slide the Front Panel down so the studs on the hood go through the stud holes in the bottom of the panel.
6. At one corner, align the screw holes of the Front Panel with the End Panel and screw together with the screws provided.
7. Repeat at the opposite end.



OPTIONAL BROILER HOOD ENCLOSURE PANEL INSTALLATION INSTRUCTIONS

07	JFA	1-21-16	NO CHANGE		MODEL #			ITEM #	WORK ORDER	<div><div>GAYLORD</div><div>10900 SW. AVERY ST. TUALATIN OR 97062-1149 (503) 691-2010</div></div>	WORLD HOODS 1524mm [5'-0"] BURGER KING CORPORATION			DATE: 12/17/09
06	JFA	1/27/14	NO CHANGE		ELX-ND-BDL-PM-OB-43-(BK-WBH-5-0)						SCALE: N.T.S.			
05	JFA	10/10/11	NO CHANGE								DWG. NO.: C-12647			
04	CG	8/01/11	REVISED TO ELX								FILE NO.:			
REV/DWN.BY	DATE	DESCRIPTION	APP'D	DRAWN BY: SN	DESIGN BY:	CHECKED BY:	ELECT. CHECK:	APPR'D. BY:	F.P. CHECK	SHEET NO.: 14	REV. NO.: 07			



HANGING DETAIL FOR BROILER HOOD

07	JFA	1-21-16	NO CHANGE		MODEL #			ITEM #	WORK ORDER	<div><div>GAYLORD</div><div>10900 SW. AVERY ST. TUALATIN OR 97062-1149 (503) 691-2010</div></div>	WORLD BROILER HOOD 1524mm [5'-0"] BURGER KING CORPORATION			DATE: 12/17/09
06	JFA	1/27/14	NO CHANGE		ELX-ND-BDL-PM-OB-43-(BK-WBH-5-C)						SCALE: N.T.S.			
05	JFA	10/10/11	NO CHANGE								DWG. NO.: C-12647			
04	CG	8/01/11	REVISED TO ELX								FILE NO.:			
REV/DWN.BY	DATE	DESCRIPTION			APP'D	DRAWN BY: SN	DESIGN BY:	CHECKED BY:	ELECT. CHECK:	APPR'D. BY:	F.P. CHECK	SHEET NO.: 15	REV. NO.: 07	

CONDUIT WITH
CABLE TO FIRE SYSTEM
CABINET BY FIRE SYSTEM
CONTRACTOR

32 [1.25"] MECHANICAL GAS VALVE
FURNISHED BY FIRE SYSTEM
CONTRACTOR, INSTALLED BY
PLUMBER

25 [1"] GAS PIPE
TO FRYER HOOD

25 [1"] GAS PIPE
TO BROILER HOOD

CEILING

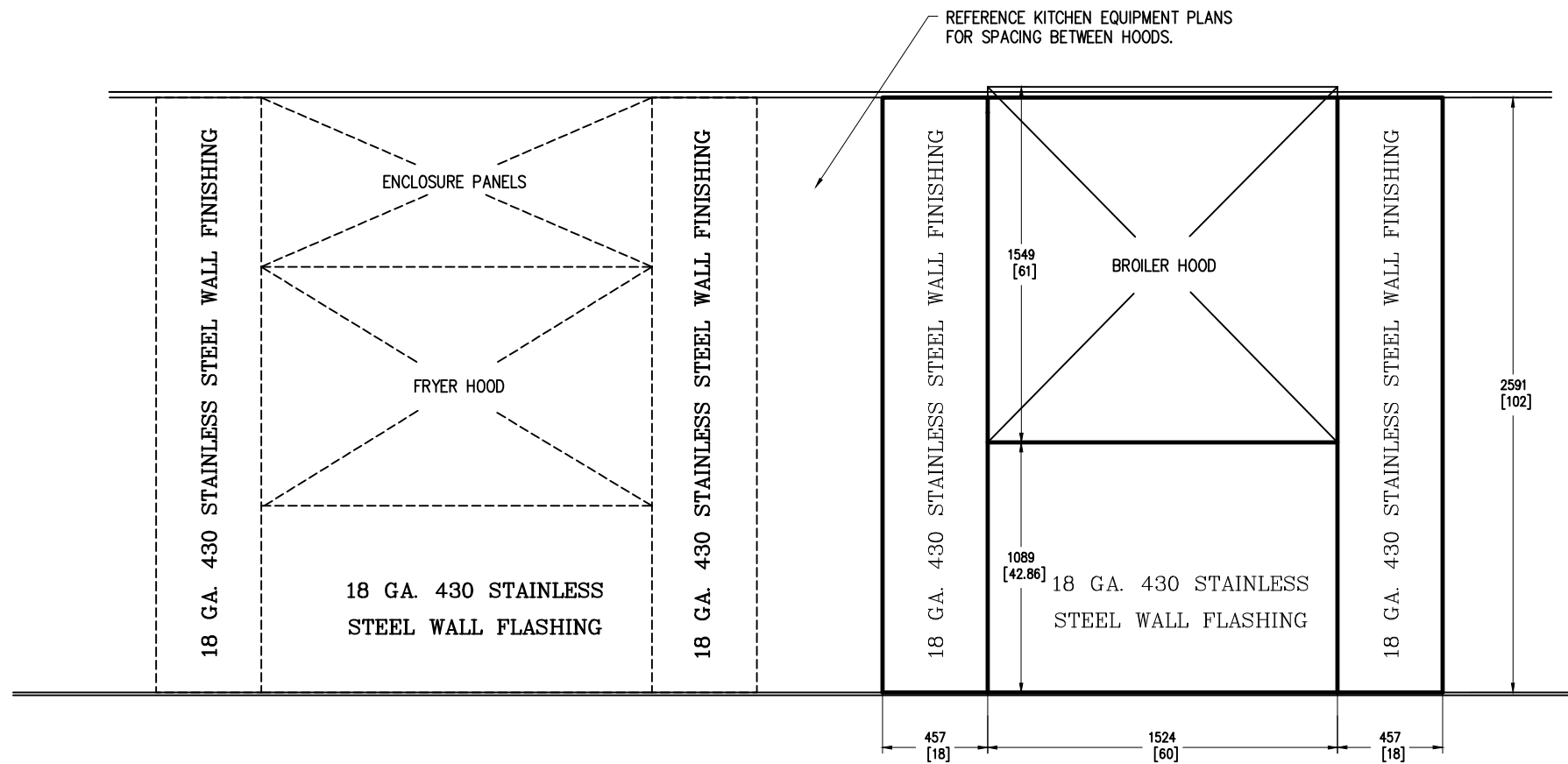
FIRE SYSTEM DETAIL

07	JFA	1-21-16	NO CHANGE		MODEL #	ITEM #	WORK ORDER
06	JFA	1/27/14	NO CHANGE		ELX-ND-BDL-PM-OB-43-(BK-WBH-5-0)		
05	JFA	10/10/11	NO CHANGE				
04	CG	8/01/11	REVISED TO ELX				
REV	DWN	BY	DATE	DESCRIPTION	APP'D	DRAWN BY: SN	DESIGN BY:
						CHECKED BY:	ELECT. CHECK:
						APPR'D. BY:	F.P. CHECK


GAYLORD
10900 SW. AVERY ST.
TUALATIN
OR 97062-1149
(503) 691-2010

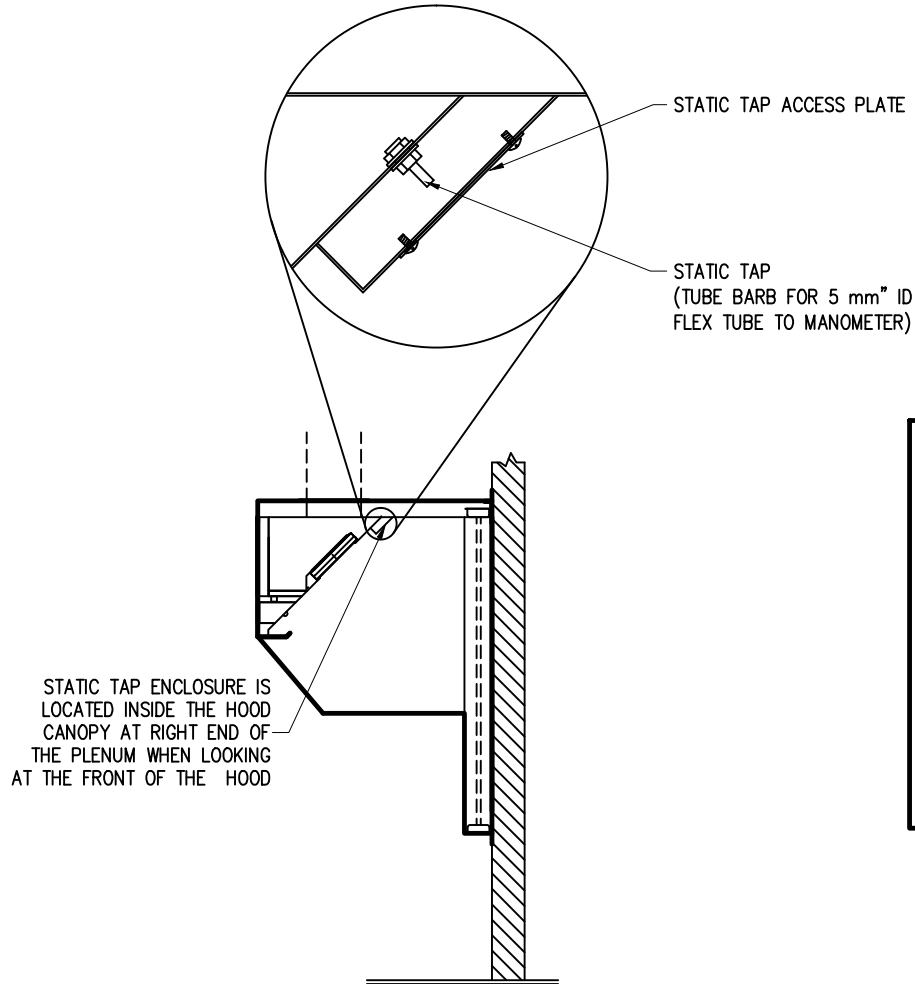
WORLD BROILER HOOD
1524mm [5'-0"]
BURGER KING CORPORATION

DATE: 12/17/09
SCALE: N.T.S.
DWG. NO.: C-12647
FILE NO.:
SHEET NO.: 16 REV. NO.: 07



OPTIONAL WALL FLASHING DETAIL
PROVIDED BY GAYLORD

07	JFA	1-21-16	NO CHANGE		MODEL #			ITEM #	WORK ORDER	 10900 SW. AVERY ST. TUALATIN OR 97062-1149 (503) 691-2010	<div>WORLD BROILER HOOD</div> <div>1524mm [5'-0"]</div> <div>BURGER KING CORPORATION</div>				DATE:	12/17/09
06	JFA	1/27/14	NO CHANGE		ELX-ND-BDL-PM-OB-43-(BK-WBH-5-C)										SCALE:	N.T.S.
05	JFA	10/10/11	NO CHANGE												DWG. NO.:	C-12647
04	CG	8/01/11	REVISED TO ELX												FILE NO.:	
REV	DWN.	BY	DATE	DESCRIPTION	APP'D	DRAWN BY	SN	DESIGN BY	CHECKED BY	ELECT. CHECK	APPR'D. BY	F.P. CHECK	SHEET NO.:	18	REV. NO.:	07



GAYLORD RECOMMENDS MEASURING THE STATIC PRESSURE IN THE PLENUM AS THE MEANS BY WHICH TO DETERMINE EXHAUST FLOW. THE STATIC TAP IS ACCESSED BEHIND A PLATE LOCATED AS SHOWN IN THE DRAWING TO THE LEFT.

REQUIREMENTS:

- A MANOMETER THAT READS IN PASCALS AND A 5 mm ID FLEXIBLE TUBE TO CONNECT THE STATIC TAP TO THE MANOMETER
- READING MUST BE TAKEN AT ROOM TEMPERATURE WITH COOKING EQUIPMENT OFF AND COOL

THE PROPER STATIC PRESSURE READING FOR THE 1800 M³/H [1060CFM] SPECIFIED FOR THIS HOOD AND COOKING EQUIPMENT = 174 Pa [.7 W.G.]

PROCEDURE TO CONFIRM HOOD EXHAUST VOLUME

07	JFA	1-21-16	NO CHANGE		MODEL #	ITEM #	WORK ORDER
06	JFA	1/27/14	NO CHANGE		ELX-ND-BDL-PM-OB-43-(BK-WBH-5-0)		
05	JFA	10/10/11	NO CHANGE				
04	CG	8/01/11	REVISED TO ELX				
REV'D	BY	DATE	DESCRIPTION	APP'D	DRAWN BY	SN	DESIGN BY
					CHECKED BY		ELECT. CHECK
					APP'R'D. BY		F.P. CHECK




WORLD BROILER HOOD
1524mm [5'-0"]
BURGER KING CORPORATION

DATE:	6/9/10
SCALE:	N.T.S.
DWG. NO.:	C-12647
FILE NO.:	
SHEET NO.:	19
REV. NO.:	07

BK ROC Hood / Ex Fan / Fire System / HVAC Control Matrix as of 5-12-09

Action	Reaction					Comments
	Ex Fan	Electric Pwr to Cooking Equip.	Mech. Gas Valve	HVAC Units	Make up air unit (if applicable)	
Fan sw. turned on	On	On	On	On	On	Note: HVAC Units must be on before ex fan can come on
Fan sw. turned off	Off	Off	On	On	Off	
Fire system discharges	On	Off	Off	Off	Off	
Slipping fan belt	On	Off	On	On	Off	Pwr to cooking equip. off via current sensor
Broken fan belt	On	Off	On	On	Off	Pwr to cooking equip. off via current sensor
Power outage	Off	Off	On	Off	Off	
HVAC system turned off	Off	Off	On	Off	Off	

07	JFA	1-21-16	NO CHANGE		MODEL #	ITEM #	WORK ORDER
06	JFA	1/27/14	NO CHANGE		ELX-ND-BDL-PM-OB-43-(BK-WBH-5-0)		
05	JFA	10/10/11	NO CHANGE				
04	CG	8/01/11	REVISED TO ELX				
REV	DWN	BY	DATE	DESCRIPTION	APP'D	DRAWN BY: SN	DESIGN BY: CHECKED BY: ELECT. CHECK: APPR'D. BY: F.P. CHECK

 10900 SW. AVERY ST. TUALATIN OR 97062-1149 (503) 691-2010	WORLD BROILER HOOD 1524mm [5'-0"] BURGER KING CORPORATION	DATE: 12/17/09
		SCALE: N.T.S.
		DWG. NO.: C-12647
		FILE NO.:
		SHEET NO.: 20 REV. NO.: 07